



PRESENTATION 2022

LOCATION IN EUROPE



● Company Head Office:

ČZ a.s.

Sluneční náměstí 2540/5

CZ-158 00 Praha 5

GPS: 50,050537 ° N

14,3420461 ° E



● Production Plant:

ČZ a.s.

Tovární 202

CZ-386 15 Strakonice

GPS: 49,2534136 ° N

13,9079304 ° E

HISTORY



- 1919** Founded under the name Jihočeská zbrojovka
- 1923** Original production – small arms
- 1930** Production of bicycles
- 1931** Production of chains
- 1934** Production of tools
- 1935** Production of motorcycles
- 1954** Production of castings
- 1981** Production of turbochargers
- 1988** Production of gearboxes for Škoda-VW passenger cars
- 1993** Privatisation of the company – ČZ Strakonice, a.s.
- 1995** Joint Venture ČZ-TURBO-GAZ, Inc. in Russia
- 1999** Production of forklift trucks DESTA
- 2004** Takeover by principal shareholder ČZ a.s.
- 2019** 100 year anniversary



COMPANY PROFILE



	2018	2019	2020	2021	2022
Gross Sales [mil. EUR]	64.1	61.4	52.4	51.5	54.8
Domestic Sales [mil. EUR]	26.1	24.2	22.1	19.7	19.4
Export [mil. EUR]	38.0	37.2	30.3	31.8	35.4

Number of Employees (without Ltd.):

733

Total Area:

500 000 m²

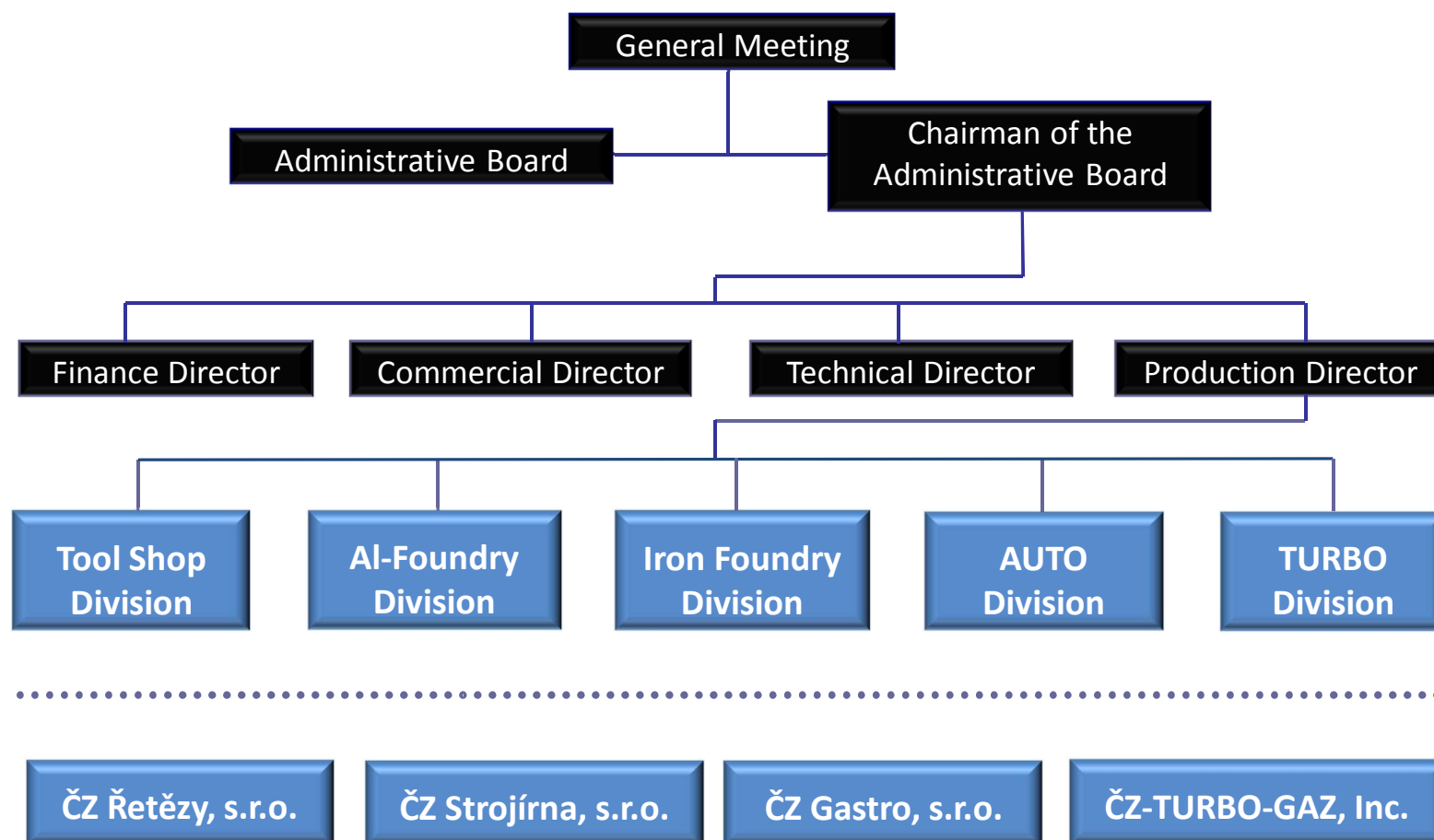
Floor Area:

160 000 m²

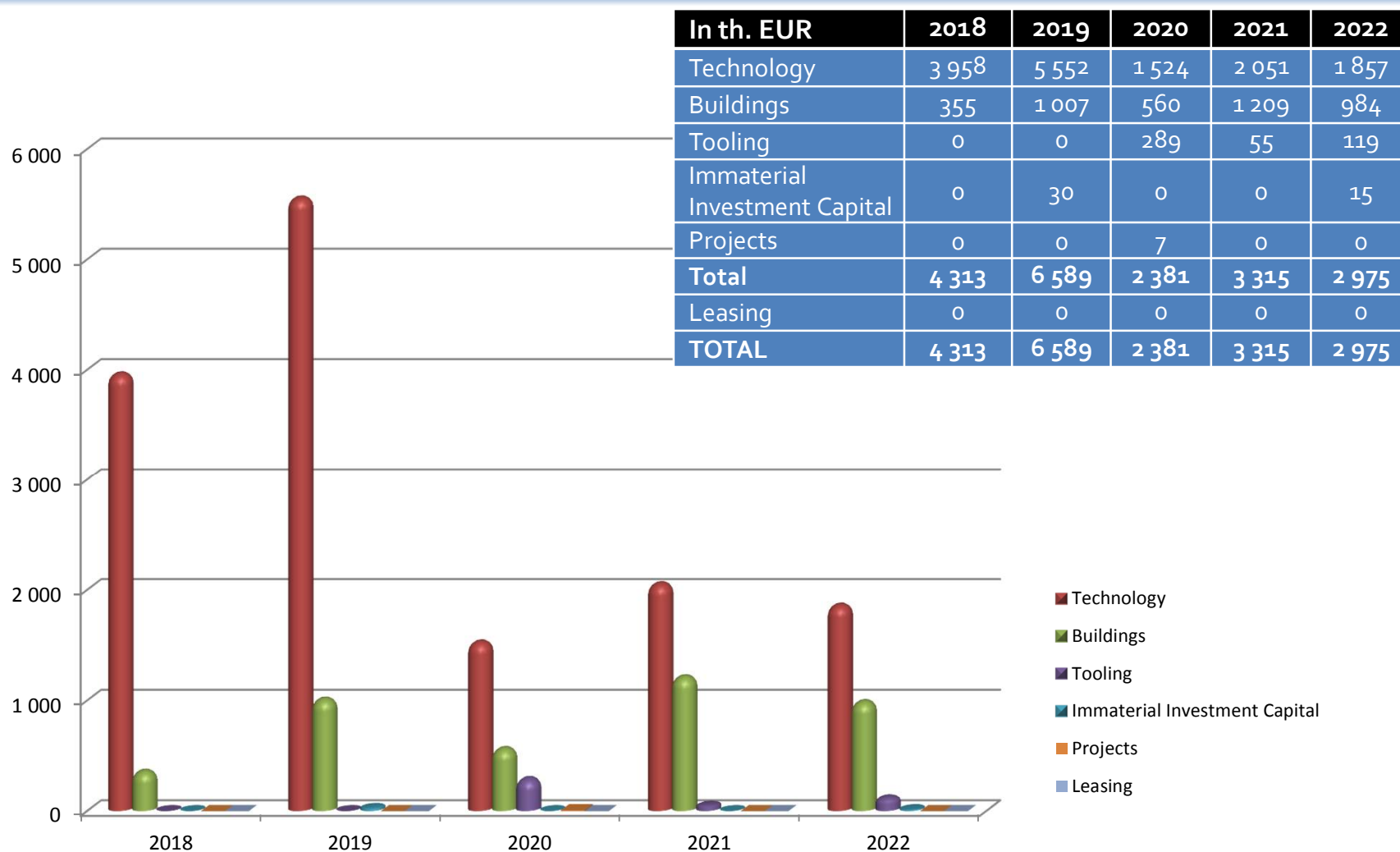
Ownership Structure:

100% ČZ a.s.

ORGANIZATION CHART



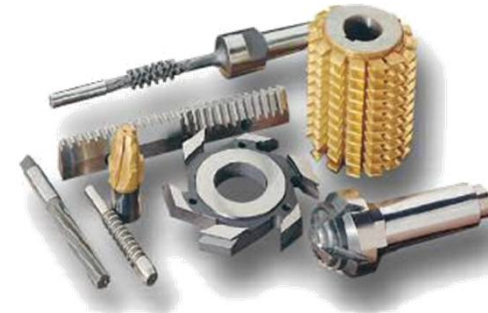
CAPITAL INVESTMENTS



DIVISION TOOL SHOP



- Moulds for pressure castings of Al and Zn alloys
- Moulds for thermosets (Prepreg, SMC)
- Patterns for grey and nodular cast iron
- Machining fixtures, measuring gauges, calibers, spare parts
- Number of employees 145



REFERENCES

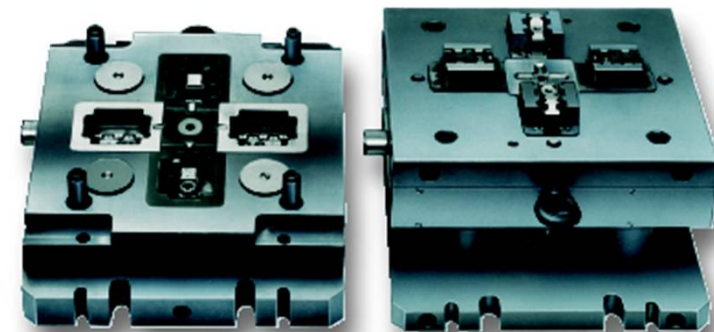
- Aisin, Aisan, ALW, Aluprogess, BRISK, DURA Automotive, Faurecia, HDO GmbH, JOPP, JTEKT, Kovolis, Kovolit, KSM Castings, Legrand, RAVAK, ŠKODA Auto, Toyota Gosei

QUALITY

- Certification according to ISO 9001

PRODUCTION FACILITIES

- CNC machines 3 & 5-axis
- CNC lathes
- Electro-erosive machining
- Grinding, milling, deep drilling
- Tooling assemblies, repairs
- Own design office, CAD-CAM
- CMM measuring, optical scanner



DIVISION ALUMINUM FOUNDRY



- Production of high pressure die castings: DIN226/EN-AB46000/AlSi9Cu3(Fe)
DIN231/EN47100/AlSi12Cu1(Fe)
- Production of low pressure die castings: LM22/EN-AB-45400/AlSi5Cu3
LM25/EN-AB-42100/AlSi7Mg
DIN239/EN-AB-43000/AlSi10Mg(a)
- Annual capacity 3 000 t
- Number of employees 88

REFERENCES

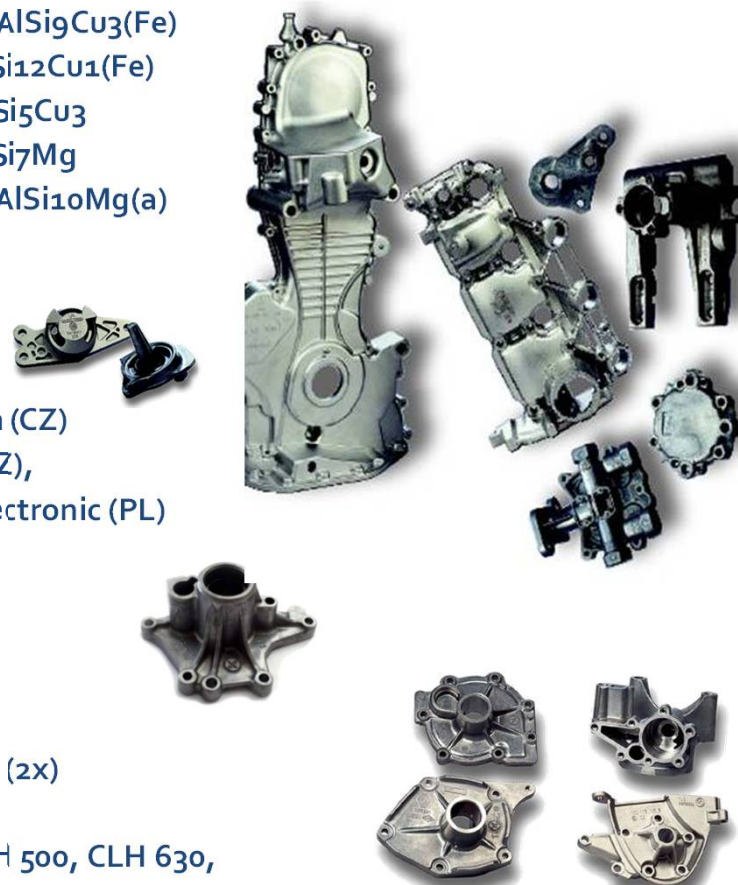
- Aisin (CZ), ALW (CZ), Aluprogess (CZ), John Deere (FR), Mubea (CZ)
C.C.N. (FR), Inproma (CZ), EPCE (CZ), GMR (CZ), Isolit Bravo (CZ),
Motor Jikov (CZ), PSP Pohony (CZ), Saviotechnics (CZ), Tyco Electronic (PL)

QUALITY

- Certification according to IATF 16949

PRODUCTION FACILITIES

- Melting gas furnaces STRIKO (2x) and electric furnaces ELSKLO (2x)
- De-gassing equipment
- Manually operated or fully automatic machines CLH 400, FRECH 500, CLH 630, FRECH 800, CLD 1600 (locking force)
- Low pressure casting machine BPS 650 SX (3x) – produced by LPM Italy
- Continuous line for heat treatment T4 & T6
- Trimming presses (range 8t – 60t), tumbling and blasting equipment, hand-finishing, visual inspection



DIVISION IRON FOUNDRY



- Shell molded iron castings (Croning method)
- Casting of grey and nodular cast iron including SiMo, weight 1 – 10 kg
- Annual capacity 3 000 t/year
- Number of employees 89

REFERENCES

- Divisions in ČZ Group (AUTO, TURBO)
- Motorenfabrik HATZ – Germany
- Kaeser Kompressoren – Germany

QUALITY

- Certification according to ISO 9001 and VDA 6.1

PRODUCTION FACILITIES

- Modern electric melting furnace, semi-automatic pouring line FDC
- Production of shell moulds and cores on special Hottinger and Shalco machines



DIVISION AUTO



- Machined engine components made of iron and aluminium
- Basic technologies: turning and milling
- Number of employees 112

REFERENCES

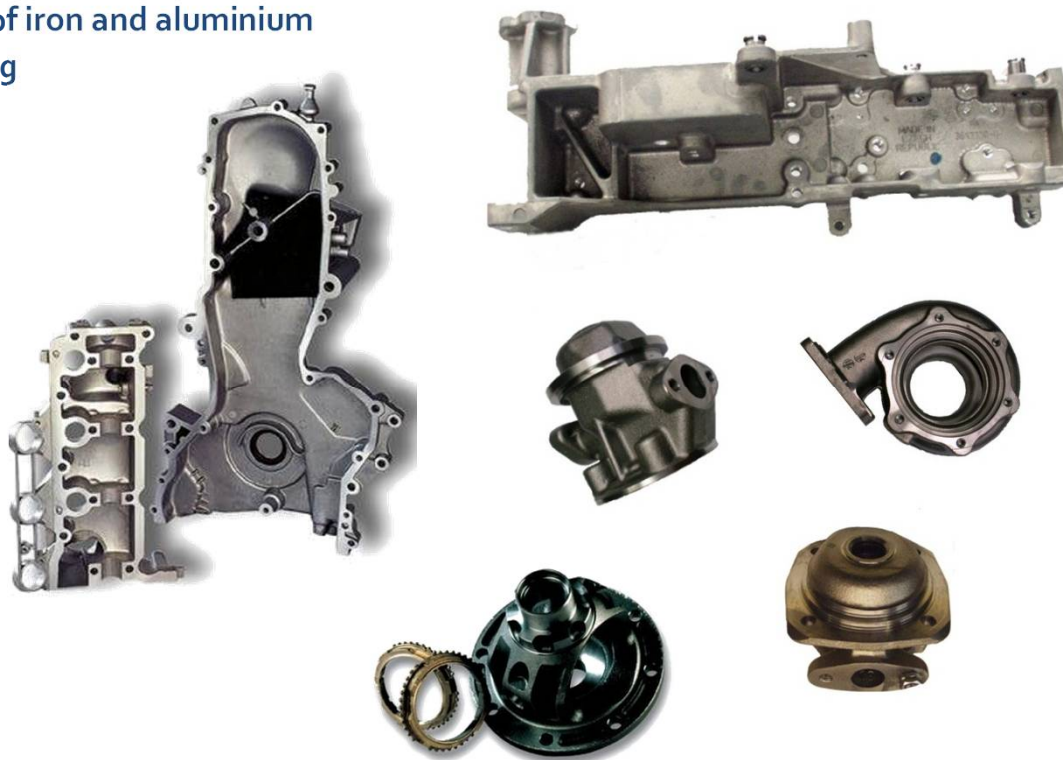
- ŠKODA-Auto – CZ
- VW – Germany
- AISIN – CZ
- Honeywell – Europe
- Rege Motorteile – Germany
- METAZ – CZ
- Division TURBO – CZ
- Oerlikon Graziano – Italy
- John Deere

QUALITY

- Certification according to IATF 16949

PRODUCTION FACILITIES

- Flexible production capacities (machining centres, high-output universal NC and CNC machines, special machines)
- Universal and special machines for production of synchronous rings



DIVISION TURBO



- Development, production of turbochargers for CD engines (25 – 400 kW) and customer service
- Turbocharger family types Co9, C1, K2, K3 (FG, WG, VTG – electronic and pneumatic controlling – and water cooling options)
- Annual production capacity approx. 350.000 pcs/year
- Number of employees 132

REFERENCES

- Producers of trucks, tractors and utility cars
- John Deere – France, USA, Mexico, Argentina
- AGCO Sisu - Finland
- Englo-tech Co. – China
- KAMAZ, GAZ, JAMZ, AMZ, ZMZ – Russia
- Tamosan – Turkey
- GENERAC - USA

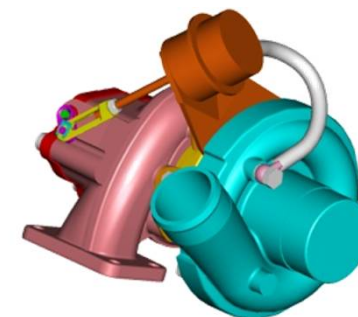
QUALITY

- Certification according to ISO 9001

PRODUCTION FACILITIES

- Flexible production base – mainly high-output universal NC and CNC machines, special machines for welding, balancing and measuring

www.czas.cz



ČZ ŘETĚZY, S.R.O.



- Production and development of roller and bush chains from the pitch 6,35 mm up to 25,4 mm, motorcycle chains, timing systems for cars and motorcycles including silent chains, special industrial chains
- Development and production of chain manufacturing machines
- Annual capacity 2 500 000 m
- Number of employees 147

REFERENCES

- European and world producers of cars and motorcycles – VW, Audi, Bentley, ZMZ, KTM, BMW, Betamotor, Husquarna, Ducati Sachs, Loncin, Jawa
- “A-class” supplier for VW, Audi, KTM

QUALITY

- Certification according to IATF 16949

PRODUCTION FACILITIES

- Single purpose and special machines for forming
- Modern technologies of heat treatment including process control and regulation



ČZ STROJÍRNA, S.R.O.



- Overhauling and modernization of machines
 - CNC universal and special grinding machines
 - Grinding machines for bearing and glass industry
 - Single purpose machines, flatting machine tools
 - Production of assembly subgroups and individual parts

REFERENCES

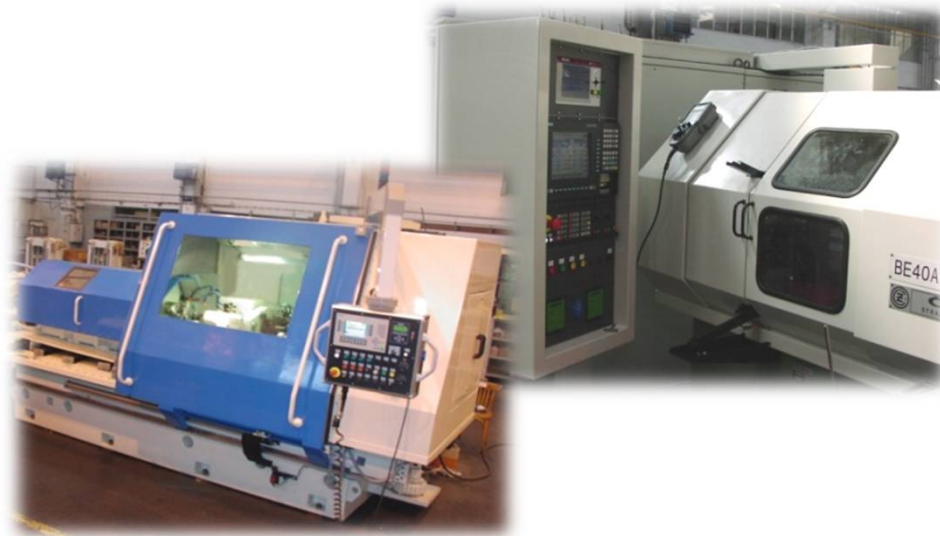
- Schaeffler Group
- Franklin
- Kunzmann
- DENSO
- P.C.I.
- SMS-MEER
- Bosch Diesel Jihlava, ŠKODA-Auto, Motorpal Jihlava, Žďas Žďár, Moser Karlovy Vary
- ZKL Brno, ZKL-VRL Praha, KOYO Olomouc

QUALITY

- Certification according to ISO 9001:2008

PRODUCTION FACILITIES

- Universal machines, NC and CNC machines, special machine tools
- Closed production cycle including heat treatment – supported by division Tool Shop



DEPARTMENT OF TESTROOMS & LABORATORIES



- Mechanical, metallographic and chemical tests
(accredited according to ČSN EN ISO / IEC 17 025 – Testing Laboratory No. 1285)
- Other tests of materials, semi-finished products and components
- Professional activities relating to materials
- Specification of residual impurities according to ISO 16232



EQUIPMENT:

- Testing (tearing) machines
- Hardness testers
- Pendulum impact testing machine (CHARPY)
- Equipment for metallographic samples production
- Optical microscopes
- Optical emission spectrometer
- Equipment for chemical analysis
- Analytical scales
- Laboratory ovens and driers
- Contaminative unit (preparation of samples for residual impurity evaluation)



CALIBRATION SERVICES



- Accredited services:

Gauge calibration with respect to:

- Length
- Plane angle
- Time
- Torque
- Pressure

- Non-accredited services:

- Dimensional measurement including digitizing
- Implementation of system management in calibration labs
- Consulting and training services

- Licence according to ČSN EN ISO / IEC 17 025



WORKING SAFETY & ENVIRONMENT



WORKING SAFETY

- Focus on prevention and avoidance of the risk of possible work injuries or diseases resulting from the working process (training, EU standard application, safety device application)
- Own surgery cognizant of the working conditions in the company

ENVIRONMENT

- Orientation to non-waste technologies, waste material sorting and disposal
- Water system – consciousness of requirements for waste water quality and its monitoring
- Atmosphere – used technologies meet the required limits and are periodically monitored

Summary

- Certification according to ISO 14 001, ISO 9001
- Certification according to VDA 6.1, IATF 16949
- Certification „Safe Enterprise“



CONTACTS



ČZ a.s. – Commercial Director

Mr Přemysl Papež, Tel.: +420 383 342 170

E-mail: premysl.papez@czas.cz

Division Tool shop – Sales Manager

Mr Jaroslav Krivanec, Tel.: +420 383 342 327

E-mail: jaroslav.krivanec@czas.cz

Division Al Foundry – Sales Manager

Mr Filip Lukeš, Tel.: +420 383 342 321

E-mail: filip.lukes@czas.cz

Division Iron Foundry – Sales Manager

Mr Jan Kovarovič, Tel.: +420 383 342 349

E-mail: jkovarovic@czas.cz

Division Auto – Sales Manager

Mrs Martina Frčková, Tel.: +420 383 342 119

E-mail: martina.frckova@czas.cz

Division Turbo – Director

Mr Nils Brejaart, Tel.: +420 383 342 596

E-mail: nbrejaart@czas.cz

ČZ Řetězy, s.r.o. – Sales Manager

Mrs Ludmila Michálková, Tel.: +420 383 342 358

E-mail: lmichalkova@czas.cz

ČZ Strojírna s.r.o. – Executive Director

Mr Jaroslav Jána, Tel.: +420 383 342 447

E-mail: jjana@czas.cz

Testrooms & Laboratories – Manager

Mr Jiří Motl, Tel.: +420 383 342 315

E-mail: laboratore@czas.cz

Calibration Services – Manager

Mr František Podlaha, Tel.: +420 383 342 407

E-mail: fpodlaha@czas.cz